

FieldLynx™ Windows Installation Quick Start

Install FieldLynx onto Windows

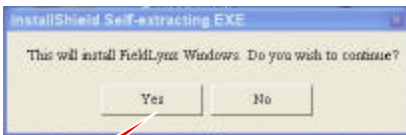
You must have the following items before proceeding with these installation instructions:

- Computer running Windows XP™ or newer Operating System.
- FieldLynx Installation software either on a CD or on an accessible network drive.

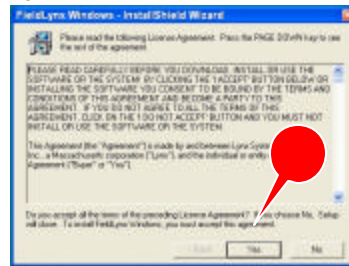
Step 1: Installation

1. Insert the software CD or access the network with the executable file.
2. Locate the FieldLynx for Windows installation program. It will be named **FL"x_xx".exe** (where "x_xx" is the current version number.)

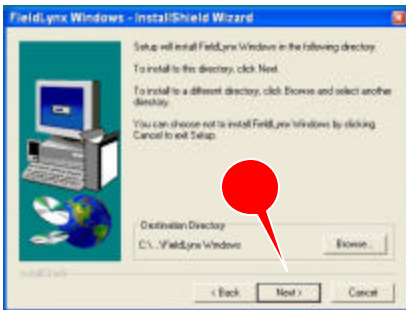
3. Double click on FLx_xx.exe. Tap **Yes** to continue installation.



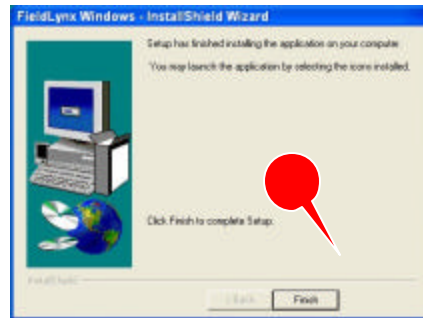
4. Accept the End User Licence Agreement (EULA)



5. Click **Next** and accept all the default directory



6. Finish by clicking on the **Finish** button.



7. You can launch FieldLynx on your computer directly from the Installer, or you can follow the next steps.

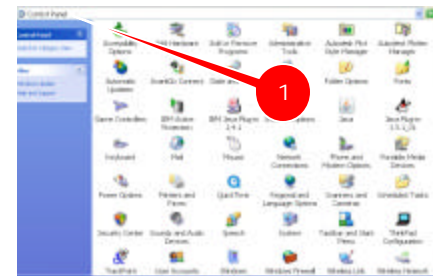
8. Tap the **Start** Icon  and Select **Programs**
9. From the **Programs** Folder, tap  to open FieldLynx.

Step 2: Configuring Database and General Preferences

The Database computer will also host NetExchange to allow transfer of data between the Meet Management computer and the FieldLynx computer.

The images below show brief steps to setup a unique IP address for the FieldLynx computer. This process is the same as setting up the FinishLynx and LynxPad computers for communicating and sharing files on the network.

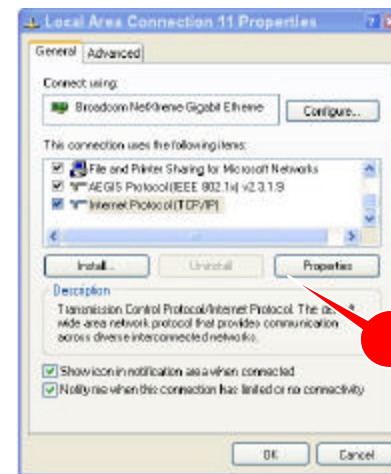
1. Open **Control Panel** from the **Start** menu.



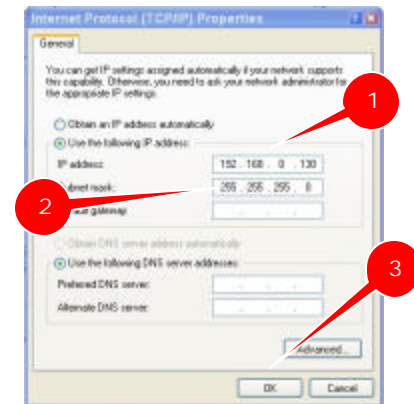
2. Tap on the **Network Connections** icon



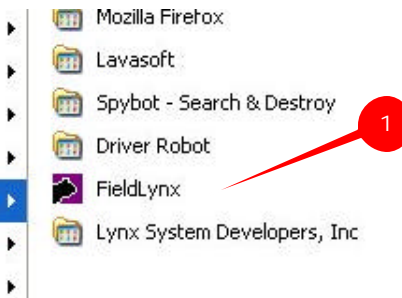
3. Select **Internet Protocol** then click on **Properties**.



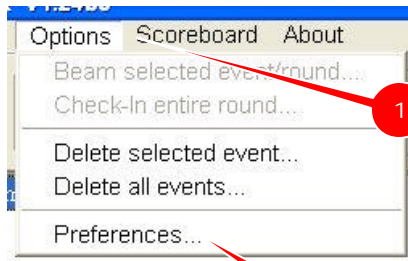
4. Assign a unique **IP address** to the computer in the space provided. We recommend using one in the range 192.168.0.130 – 192.168.0.140. Set the **subnet mask** to 255.255.255.0 Tap on **ok**.



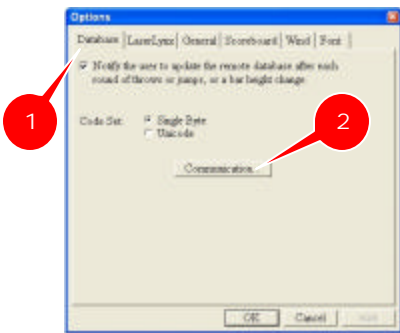
5. Open FieldLynx by tapping on the **FieldLynx** icon from the **Programs** menu.



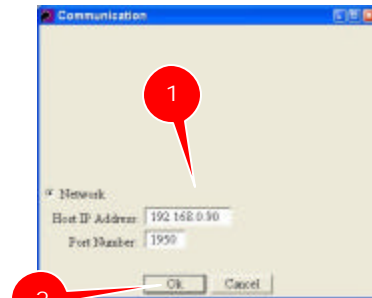
6. In the main screen Tap on the **Options** menu and select **Preferences**.



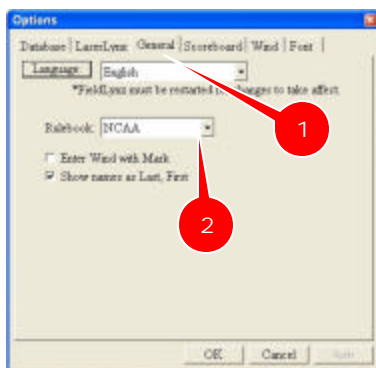
7. Tap on the **Database** tab and Tap the **Communication** button



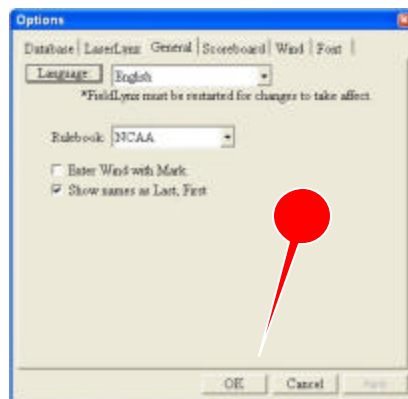
8. Confirm the Default **IP address** of the NetExchange computer is already entered. Tap on **ok**.



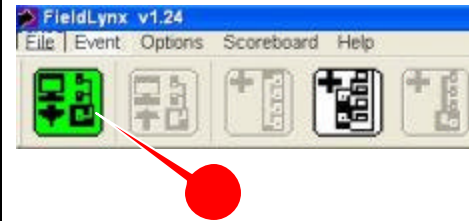
9. Select the **General** tab and confirm settings for **Rulebook**, etc. For instructions on setting up Wind Gauges and Scoreboards, see the Peripherals Quick Start Card.



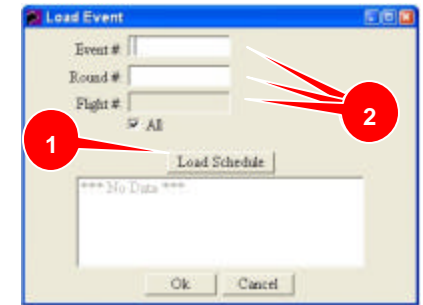
10. Tap on **ok** to return to the FieldLynx Main Screen



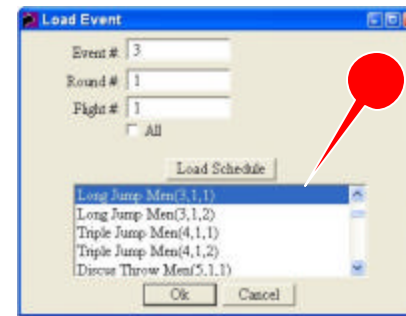
11. Tap on the **Get Events** icon.



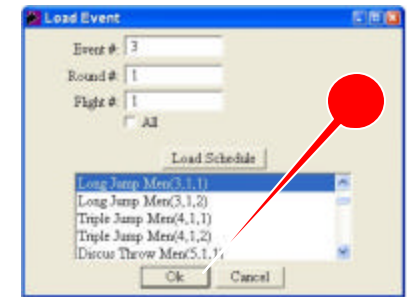
12. Tap on the **Load Schedule** button, or enter the **Event, Round** and **Heat** number to get events



13. Select an **Event** from the schedule



14. Tap **Ok** and FieldLynx will download the event.



17. See Individual Event Quick Start Guides for Event Administration.